

FURUTECH

PURE TRANSMISSION



AEx
オーディオ銘機賞
Audio Excellence Award 2008



Make A More Powerful Connection With
Furutech Pure Transmission Technology

The Furutech Flow-28 Inline Power Filter New for 2011



AC-1501R EMI-filtering IEC

AC Power Can Make or Break Your System

The audio you hear from your home entertainment system is essentially the incoming electricity itself, and the typically violent storms riding the AC line and its ground is very detrimental to the performance of your components.

The Flow-28 is a sophisticated, luxuriously made and finished inline power filtering unit that eliminates many common problems caused by contaminated electrical power lines. It protects against distortion caused by ground noise, voltage spikes and sags, high frequency power supply noise from other components in your own system, plus high frequency digital noise from processors and digital interconnects.

You're never alone when you take your seat; the residential AC supply is shared with other apartments, homes, and businesses on the same utility transformer explaining why many enthusiasts notice their systems perform to a higher standard late at night and weekends.

The Flow-28 features the FI-28R IEC connector. And it incorporates the AC-1501R EMI-filtering IEC Inlet.

The Flow-28 Inline AC Filter lowers noise on every component on which it's used resulting in very natural and extremely fine resolution down and through the utterly silent noise floor. It improves sound staging and image palpability and creates musical highs, an attractive, engaging midrange, tight and controlled bass, plus you'll notice power and dynamics to spare.

Features

- The cover of the filtering unit combines two "active" materials: Nano-sized ceramic particles and powdered carbon. Nylon and fiberglass are incorporated as well forming an extremely effective, *mechanically and electrically* damped body.
- For connection between power cables and power distributors or power cables and components. Eliminate and prevent radiated AC noise
- Fitted with Furutech's rhodium-plated α (Alpha) nonmagnetic FI-28R connector
- AC-1501R EMI-filtering IEC, rhodium-plated α (Alpha) nonmagnetic copper alloy conductors
- AC-1501R EMI filter features a parallel circuit with in-line coil and condenser, reducing noise at 1MHz by

10dB and at 10MHz by more than 30dB

- Floating Field Damper (Earth/Ground Jumper System) US Patent No.: 6,669,491
- Patent-pending metal cable clamp improves grip and reduces mechanically and electrically induced distortion

AC-1501R Specifications:

Rhodium plated α (Alpha) non-magnetic copper alloy conductors

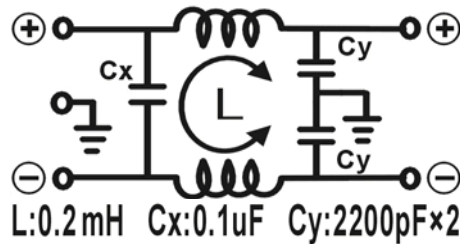
Outer cover- Cr Plated steel plate

Inner cover- Nylon glass fiber

Inner Box- Nylon glass fiber

Inner parts held by Piezo Epoxy

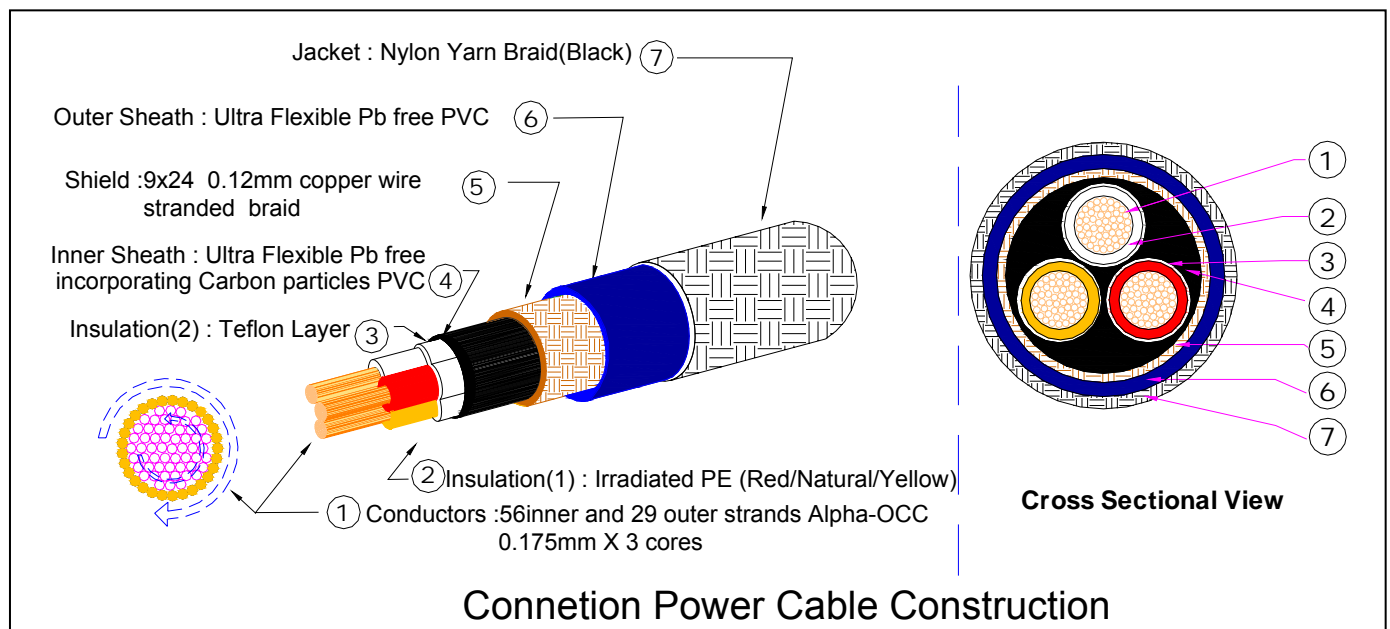
Rating: AC 115V/250V 15A 50/60Hz



- α (Alpha) conductor shield for protection against radiated noise
- RoHS-compliant flexible PVC sheath improves vibration isolation
- Special high-grade PE Insulation contributes to reduced capacitance
- Incorporating Furutech's special passive GC-303 EMI filtering material

Cable Specifications:

- Conductors: 56-strand (Inner) and 29-strand (Outer) α (Alpha) OCC conductor • 0.175mm x 3 cores
- Insulation-1: Special irradiated PE (Red/Natural/Yellow) 3.45mm diameter
- Insulation-2: irradiated PE surrounded by Teflon tape wrap, 3.6mm diameter
- Inner Sheath: RoHS-compliant flexible PVC incorporating carbon particles
- Shield: 0.12mm diameter α (Alpha) Conductor wire braid
- Sheath: RoHS-compliant flexible PVC, 14.2mm diameter
- Jacket: Vibration damping special Nylon Yarn Braid (Black)



Make A More Powerful Connection with Furutech!

FURUTECH CO., LTD. service@furutech.com

All metallic parts are treated with the

***FURUTECH α (Alpha) Process (Super Cryogenic & Demagnetizing Treatment.)**